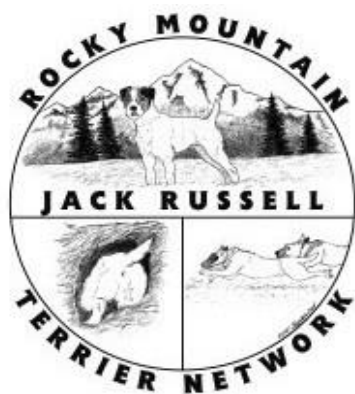


# **RUCKUS IN THE ROCKIES I & II**

## **2 CLASS B TRIALS**

**SEPTEMBER 21 & 22, 2019**

by Rocky Mountain Jack Russell Terrier Network



**Register Online with TrialVault 2.0 at  
[www.trialvault.dog](http://www.trialvault.dog)**

Adams County Fairgrounds  
9755 Henderson Rd  
Brighton, CO 80601

### **September 21, 2019**

**Racing:** Brent Hopkins

**Youth:** Mike Bilbo

**Go-to-Ground:** Mike Bilbo

**Super Earth Go-to-Ground:**  
Mike Bilbo

**Urban Hunt**

**(Non-Sanctioned):** Jake Trujillo

**Underland Tunnel**

**(Non-Sanctioned):** Mike Cox

**Lure Coursing**

**(Non-Sanctioned):** Robert Foster

### **September 22, 2019**

**Racing:** Brent Hopkins

**Youth:** Stephen Martin

**Go-to-Ground:** Stephen Martin

**Super Earth Go-to-Ground:**

Stephen Martin

**Urban Hunt**

**(Non-Sanctioned):** Jake Trujillo

**Underland Tunnel**

**(Non-Sanctioned):** Mike Cox

**Lure Coursing**

**(Non-Sanctioned):** Robert Foster

**Sanctioned By  
The Jack Russell Terrier Club of  
America**

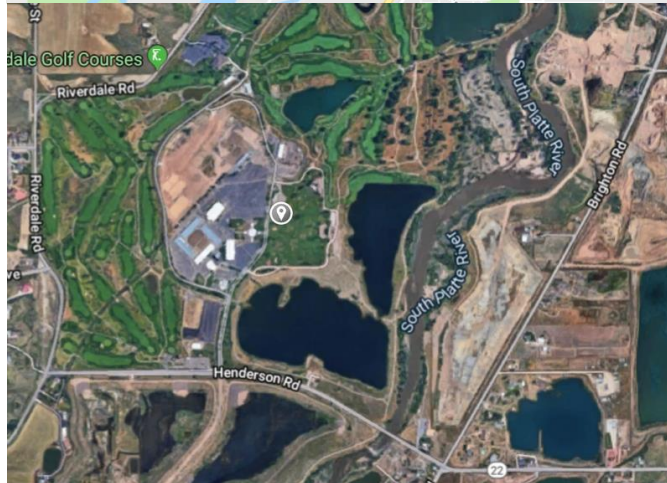


Exhibitors and owners of terriers entered in sanctioned events must be JRTCA members. Submit certificates and a copy of your JRTCA membership form with your registration.

## Trial Site

### **Adams County Fairgrounds**

*9755 Henderson Rd  
Brighton, CO 80601*



## Lodging

Camping will be available on the trial grounds. Electric only, \$25.00 per night. Please include with entries.

Super 8 by Wyndham  
Westminster Denver North (7.5 mi)  
12055 Melody Dr  
Westminster CO 80234  
(303) 261-8794

La Quinta Inn by Wyndham  
Denver Northglenn (8.3 mi)  
345 West 120th Ave  
Westminster CO 80234  
(303) 252-9800

Motel 6 #4029 (13 mi)  
65 S Grand Ave  
US-85 at SR 52  
Fort Lupton CO 80621  
(303) 857-1800  
No pet fee

Uptown Suites Extended Stay Westminster - (8.3 mi)  
1825 W 120th Ave  
Westminster, CO 80234  
(866) 447-2606

La Quinta Inn & Suites by Wyndham  
Henderson-Northeast Denver (5.8mi)  
9041 Brighton Rd  
Henderson, CO 80640  
(303) 301-1050

Best Western Brighton Inn (4.9 mi)  
15151 Brighton Rd  
Brighton CO 80601  
(303) 637-7710

## Schedule of Events

### September 21, 2019

|   |              |
|---|--------------|
| Racing.....                             | 8:30am       |
| Youth.....                              | After Racing |
| Go-to-Ground.....                       | After Racing |
| Super Earth Go-to-Ground.....           | After Racing |
| Urban Hunt (Non-Sanctioned) .....       | After Racing |
| Underland Tunnel (Non-Sanctioned) ..... | After Racing |
| Lure Coursing (Non-Sanctioned).....     | After Racing |

### September 22, 2019

|   |              |
|---|--------------|
| Racing.....                             | 8:30am       |
| Youth.....                              | After Racing |
| Go-to-Ground.....                       | After Racing |
| Super Earth Go-to-Ground.....           | After Racing |
| Urban Hunt (Non-Sanctioned) .....       | After Racing |
| Underland Tunnel (Non-Sanctioned) ..... | After Racing |
| Lure Coursing (Non-Sanctioned).....     | After Racing |

#### Entry Fees:

**\$12 per class** for RMJRTN members,

**\$15 per class** for non-members if postmarked by **September 16, 2019**.

(If not already a RMJRTN member, you may send the membership form, attached, and fees in with your trial entries.)

**\$15 per class** for RMJRTN members for post entries,

**\$16 per class** non-members for post entries.

**ALL DOGS PRE-ENTERED CAN ADD CLASSES ON THE TRIAL DAYS AT THE \$12 CLASS FEE. ALL DOGS WITHOUT PRE-ENTRY PAPERWORK WILL BE \$15 OR \$16 PER CLASS AT TRIAL DAY. POST ENTRY FEES WILL APPLY TO ANY ENTRIES POSTMARKED AFTER SEPTEMBER 16, 2019.**

## Pre-Registration

***The pre-entry deadline is September 16, 2019***

***Post entries in racing will not be accepted if heats are full.***

We accept online registrations with TrialVault. Create a free account at <https://www.trialvault.dog/> to get started. Alternately, mail paper entry forms to:

### **Rocky Mountain Jack Russell Terrier Network**

*16118 E Geddes Dr*

*Aurora, CO 80016*

### **Join us for dinner Saturday night!**

**Qdoba Hot Bar:** includes your choices of meat, rice & beans, pico de gallo, corn salsa, salsa verde, salsa roja, sour cream, hand-smashed guacamole, shredded cheese, shredded lettuce, and tortilla chips, beer/wine/soda and dessert!  
\$20 per person, please include with entries

**Please look forward to participating in a fun & exciting Raffle at the trial!**  
**Any donations for the raffle are greatly appreciated.**

PLEASE KEEP THE GROUNDS AND THE HOTELS AND MOTELS CLEAN.  
PLEASE PICK UP AFTER YOUR DOG:  
BAGGIES AND TRASH CONTAINERS WILL BE AVAILABLE.

## GENERAL RULES FOR EXHIBITORS

1. All sanctioned classes are open to Jack Russell Terriers only.
2. Exhibitors and owners of terriers entered must be current JRTCA members and must not be a member of a conflicting JRT organization or register their JRTs in any all-breed registry or conflicting JRT organization. If an exhibitor is found to be in violation of this policy, entry will be disqualified and no refunds will be given. If a violation is confirmed after the trial, placements will be voided from all JRTCA records. Exhibitors must submit a completed entry form including a signed waiver for every trial they enter.
3. Entries MUST be within the 10-15" JRTCA height standard for all sanctioned classes (with the exception of pups who have not yet met the 10" height standard); measuring devices will be available on the trial grounds.
4. Puppies (under 12 months) are not eligible for championship in any division but their own. Puppies are eligible to compete only if they have reached their four-month birthday (not 16 weeks). A puppy's age is the actual age the pup is on the day of the trial.
5. Bitches in season may not compete in any division. Pre-entry fees of bitches in season will be refunded with a veterinarian certificate, or as otherwise agreed upon by the Trial Chairperson.
6. Spayed or neutered terriers may compete in Miscellaneous Conformation. They may not compete in Puppy, Family\*, Open or Working Conformation. \*Note: For Family Classes, Brood Bitches and Stud Dogs entered may not be spayed/neutered. The offspring at their sides may be intact or spayed/neutered.
7. A terrier bred by a sanctioned JRTCA Judge may not be shown under that Judge in the conformation division.
8. Terriers owned by judges may not be entered in the division in which they are judging, but may enter the competition in any other division.
9. Terriers owned by stewards may be entered in any division provided that they find a substitute to perform their duties or have someone else show their terriers.
10. Requests for the measurement of a terrier entered in any class number may be made only by another exhibitor in that same class number or by the Judge EXCEPT in Racing. Requests for the measurement of a terrier in Racing may be made by the Judge or by an exhibitor with a terrier entered in the same class number; OR, if classes are split by gender, may call for the measurement of a terrier of the opposite gender in the same age and height category. (Example: The owner of an under adult dog entered in Racing may call for the measurement of an under adult bitch as the potential exists for them to race each other in the Championship Races.) Exhibitors racing puppies may call for the measurement of a puppy in a different age category as long as it is in the same height category. The person making the request for measurement must name the terrier or terriers they wish to have measured, but requests for measurement of entire classes will not be honored. The measurement of the terrier will be considered the terrier's official height for the duration of the trial. Only JRTCA height cards issued after September, 1999 will be honored.
11. Excessive use of squeaky or fur-like baiting devices by exhibitors is prohibited in the Conformation ring and may result in the exhibitor being excused from the class. "Excessive use" will be at Judge's discretion.
12. Exhibitors participating in the JRTCA Working Terrier classes or Certificate Go-To-Ground must submit the appropriate JRTCA certificates with pre-entries or at the time of post-entry. The Judge may require a copy of the certificate be presented to the Ring/Den steward at time of judging. Registered terriers may

submit a copy of a NHC application signed by a JRTCA Working Judge within 30 days of the date it was issued.

13. Puppies under the age of three months are not permitted on the trial grounds. Any person violating this rule will be excused from all classes entered, and asked to leave the trial site.

14. All dogs must be leashed or crated except when competition requires off-leash work. No liberty leashes allowed.

15. Overly aggressive dogs, or an owner's failure to control their dog, may result in disqualification at the discretion of the Judges or the Trial Chairperson.

16. The abuse or severe disciplining of dogs on the trial grounds is prohibited. Anyone displaying such behavior will be asked to leave the trial site, and no entry fees will be refunded.

17. Dogs other than JRTs on the grounds may be excluded or permitted at the discretion of the Trial Chairperson.

18. Exhibitors are responsible to double check the classes they have entered and be on time. No refunds will be given for missed classes.

19. The owner/handler of a terrier entering any class does so at his/her own risk and agrees to abide by the rules of the JRTCA and the trial. A copy of the JRTCA Rule Book can be downloaded from the JRTCA website ([www.therealjackrussell.com](http://www.therealjackrussell.com)).

20. Unsportsmanlike conduct, or the use of foul and abusive language, will not be tolerated. Anyone demonstrating such conduct will be asked to leave the trial site and no entry fees will be refunded. In addition, such conduct will be subject to penalties which may include the suspension of membership, restriction from entering the JRTCA National Trial, and/or fines. Trial Chairpersons have the right to refuse any entry at their sole and absolute discretion.

21. All dogs brought to JRTCA sanctioned trials must be current on vaccinations. No dogs of any age may be brought to a trial who have suspicion of contagious or infectious disease.

22. THE JUDGES' DECISIONS ARE FINAL IN ALL DIVISIONS.

## Class List

### SATURDAY

#### Racing

ALL terriers must be muzzled to race with either a plastic basket or close-ended cloth muzzle. To be eligible in the Championship, terriers must compete in both flats & hurdles. You MUST have your Jack ON DECK and securely muzzled in order to race. If you need help, please ask for it in advance. DO NOT wait until it's time to load into the starting boxes. BE PREPARED. Racing classes will be run in the precise sequence posted in this trial premium.

#### *Flat Races*

**Class 1: Pups, 4-6 months (Non-Sanctioned)**

**Class 2: Pups, 6 up to 9 months, up to 12½"**

**Class 3: Pups, 6 up to 9 months, over 12½" up to 15"**

**Class 4: Pups, 9 up to 12 months, up to 12½"**

**Class 5: Pups, 9 up to 12 months, over 12½" up to 15"**

**Class 6: Dogs, 1 year and older, 10" up to 12½"**

**Class 7: Dogs, 1 year and older, over 12½" up to 15"**

**Class 8: Bitches, 1 year and older, 10" up to 12½"**

**Class 9: Bitches, 1 year and older, over 12½" up to 15"**

**Class 10: Veteran Dog, 6 years and older, 10" up to 12½"**

**Class 11: Veteran Dog, 6 years and older, over 12½" up to 15"**

**Class 12: Veteran Bitch, 6 years and older, 10" up to 12½"**

**Class 13: Veteran Bitch, 6 years and older, over 12½" up to 15"**

**Class 14: Senior Dog, 9 Years and older, 10" up to 12½"**

**Class 15: Senior Dog, 9 Years and older, 12½" up to 15"**

**Class 16: Senior Bitch, 9 Years and older, 10" up to 12½"**

**Class 17: Senior Bitch, 9 Years and older, 12½" up to 15"**

**Class 18: Other Terrier, 1 year and older, Under 12½" (Non-Sanctioned)**

Open to Terriers that do not meet the requirements for JRTCA racing. Low-rider (under 10") or colored terrier.

**Class 19: Other Terrier, 1 year and older, Over 12½" (Non-Sanctioned)**

Open to Terriers that do not meet the requirements for JRTCA racing. Outlaw (over 15") or colored terrier.

#### *Steeplechase Races*

Puppy and Senior races over low hurdles, up to 8"

Adult and Veteran Races over higher hurdles, over 8" up to 16"

**Class 20: Pups, 6 up to 9 months, up to 12½"**

**Class 21: Pups, 6 up to 9 months, over 12½" up to 15"**

**Class 22: Pups, 9 up to 12 months, up to 12½"**

**Class 23: Pups, 9 up to 12 months, over 12½" up to 15"**

**Class 24: Senior Dog, 9 Years and older, 10" up to 12½"**

**Class 25: Senior Dog, 9 Years and older, 12½" up to 15"**

**Class 26: Senior Bitch, 9 years and older, 10" up to 12½"**

**Class 27: Senior Bitch, 9 Years and older, 12½" up to 15"**

**Class 28: UP TO 12½" PUPPY RACING CHAMPION & RESERVE**

Open to 1st place winners of 6 to 9 mo. and 9 to 12 mo. up to 12½" puppy classes. No entry fee.

**Class 29: OVER 12½" UP TO 15" PUPPY RACING CHAMPION & RESERVE**

Open to 1st place winners of all 12½" up to 15" puppy classes. No entry fee.

**Class 30: 10" UP TO 12½" SENIOR RACING CHAMPION & RESERVE**

Open to 1st place winners of all 10" up to 12½ Senior classes. No entry fee.

**Class 31: OVER 12½" UP TO 15" SENIOR RACING CHAMPION & RESERVE**

Open to 1st place winners of all 12½" up to 15" Senior classes. No entry fee.

**Class 32: Dogs, 1 year and older, 10" up to 12½"****Class 33: Dogs, 1 year and older, over 12½" up to 15"****Class 34: Bitches, 1 year and older, 10" up to 12½"****Class 35: Bitches, 1 year and older, over 12½" up to 15"****Class 36: Veteran Dog, 6 years and older, 10" up to 12½"****Class 37: Veteran Dog, 6 years and older, over 12½" up to 15"****Class 38: Veteran Bitch, 6 years and older, 10" up to 12½"****Class 39: Veteran Bitch, 6 years and older, over 12½" up to 15"****Class 40: Other Terrier, 1 year and older, Under 12½" (Non-Sanctioned)**

Open to terriers that do not meet the requirements for JRTCA racing. Low-rider (under 10") or colored terrier.

**Class 41: Other Terrier, 1 year and older, Over 12½" (Non-Sanctioned)**

Open to terriers that do not meet the requirements for JRTCA racing. Outlaw (over 15") or colored terrier.

**Class 42: 10" UP TO 12½" ADULT CHAMPION & RESERVE**

Open to 1st place winners of 10" UP TO 12½" ADULT classes. No entry fee.

**Class 43: Over 12½" UP TO 15" ADULT CHAMPION & RESERVE**

Open to 1st place winners of Over 12½" UP TO 15" ADULT classes. No entry fee.

**Class 44: 10" up to 12½" VETERAN RACING CHAMPION & RESERVE**

Open to 1st place winners of VETERANS, 10" up to 12½" classes. No entry fee.

**Class 45: Over 12½" up to 15" VETERAN RACING CHAMPION & RESERVE**

Open to 1st place winners of VETERANS, 12½" up to 15" classes. No entry fee.

**Youth****Class 46: Child Go-to-Ground (Non-Sanctioned)**

Open to any child aged 5 through 9 handling an adult Jack Russell Terrier. Judged on the child's ability to present his/her dog and knowledge of GTG. To be run through the 10-foot Novice liner; time not to be considered. If the terrier is competing in a regular GTG class, it needs to run in the regular GTG class before it can compete in Child GTG.

**Class 47: Youth Go-to-Ground**

Open to any youth aged 10 through 16 handling an adult Jack Russell Terrier. Judged on Youth's ability to present his/her dog and knowledge of GTG. To be run through 10 foot novice liner. Time not to be considered. If terrier is competing in a regular GTG class, it needs to run in regular GTG class before it can compete in Youth GTG.

**Go-to-Ground**

A timed event that simulates the terrier's natural instinct to hunt. The terrier enters an artificial den/tunnel to demonstrate its working ability. Schooling prior to the competition is not permitted. Any violation of this rule shall result in disqualification from the Go-To-Ground competition at this trial. For all classes: work is defined as baying, digging, concentrated stare, whining or biting at the bars. A break in work is defined as ceasing to work for a period of more than ten seconds. Leaving the quarry is defined as moving back in the tunnel away from quarry and out of the view of the judge. The judge may halt the work, if the judge believes the terrier is injuring itself. Copies of JRTCA trial certificate must be submitted with pre-entries or presented to the den steward at the time of judging. Cross entering is not permitted between certificate classes.

**Class 48: Novice Puppy**

Open to Jack Russells 6 up to 12 months which have not scored 100% in this class at a previous JRTCA trial. Entries earning a score of 100% at this trial may, upon payment of the entry fee, enter the Open Puppy Class at this trial. (One minute to reach quarry; may leave earth and re-enter several times until quarry is reached; when quarry is reached must work quarry continuously for a full 30 seconds without a break in work and without leaving the quarry; may switch from one type of work to another (examples: baying to concentrated stare or digging to baying.)

**Class 49: Novice Adult**

Open to Jack Russells one year of age or older which have not scored 100% in this class at a previous JRTCA trial. Entries earning a score of 100% at this trial may, upon payment of the entry fee, enter the Open class at this trial. (One minute to reach quarry; may leave earth and re-enter several times until quarry is reached; must work quarry continuously for a full 30 seconds without a break in work and without leaving the quarry; may switch from one type of work to another (examples baying to concentrated stare or digging to baying.)

**Class 50: Open Puppy**

Open to Jack Russells 6 up to 12 months which have scored 100% in a Novice Go-To-Ground class at this or a previous JRTCA trial. Not open to any puppies which have previously achieved 100% in this class. Puppies earning a score of 100% at this trial may, upon payment of the entry fee, enter the Puppy Championship GTG class at this trial. (30 seconds to reach quarry; may leave earth once and re-enter before quarry is reached; must work quarry continuously for one full minute without a break in work and without leaving quarry; may switch from one type of work to another.)

**Class 51: Open Adult**

Open to Jack Russells one year or older which have scored 100% in a Novice Go-To-Ground class at this or a previous JRTCA trial. (30 seconds to reach quarry; may leave earth once and re-enter before the quarry is reached; must work quarry continuously for one full minute without a break in work and without leaving quarry; may switch from one type of work to another.)

**Class 52: Puppy Championship**

Open to Jack Russells, 6 up to 12 months which have earned 100% in an Open Go-To-Ground class at this or a previous JRTCA trial. A copy of a 100% Open score sheet shall be submitted with pre-entry or be shown to the Den Steward at the time of the class. First and second place winners will be Puppy Go-To-Ground Champion and Reserve. (30 seconds to reach quarry; may leave earth once and re-enter before the quarry is reached; when quarry is reached must work quarry for one full minute without a break in work and without leaving quarry; may switch from one type of work to another.)

**Class 53: 10 up to 12½" Championship Certificate**

Open to any adult Jack Russell 10 up to 12½", one year and over, which holds a JRTCA Trial Certificate. A copy of the certificate must be submitted with pre-entry or be shown to the Den Steward at the time of the class. First and second place winners will be Go-To-Ground Champion and Reserve. (30 seconds to reach quarry; may not leave earth; work quarry for one full minute without a break in work and without leaving quarry.)

**Class 54: Over 12½ up to 15" Championship Certificate**

Open to any adult Jack Russell over 12½" up to 15", one year and over, which holds a JRTCA Trial Certificate. A copy of the certificate must be submitted with pre-entry or be shown to the Den Steward at the time of the class. First and second place winners will be Go-To-Ground Champion and Reserve. (30 seconds to reach quarry; may not leave earth; work quarry for one full minute without a break in work and without leaving quarry.)

**Class 55: 10 up to 12 ½" Veteran Championship Certificate**

Open to any adult Jack Russell 6 years of age or older, who holds a JRTCA Trial Certificate. CROSS-ENTERING IS NOT PERMITTED BETWEEN CERTIFICATE CLASSES. First and second place winners will be Go-To-Ground Champion and Reserve. (30 seconds to reach quarry; may not leave earth; work quarry for one full minute without a break in work and without leaving quarry.)

**Class 56: Over 12 ½ up to 15" Veteran Championship Certificate**

Open to any adult Jack Russell 6 years of age or older, who holds a JRTCA Trial Certificate. CROSS-ENTERING IS NOT PERMITTED BETWEEN CERTIFICATE CLASSES. First and second place winners will be Go-To-Ground Champion and Reserve. (30 seconds to reach quarry; may not leave earth; work quarry for one full minute without a break in work and without leaving quarry.)

**Class 57: Senior Championship Certificate**

Open to any adult Jack Russell 9 years of age or older, who holds a JRTCA Trial Certificate. CROSS-ENTERING IS NOT PERMITTED BETWEEN CERTIFICATE CLASSES. First and second place winners will be Go-To-Ground Champion and Reserve. (30 seconds to reach quarry; may not leave earth; work quarry for one full minute without a break in work and without leaving quarry.)



## ***Non-Sanctioned Go-To-Ground***

### **Class 58: Other Terrier Open Puppy**

Open to terrier puppies 6-12 months that do not meet the requirements for JRTCA go-to-ground competition. Ex. Low-rider, outlaw, colored terrier. To be run in the long tunnel. (30 seconds to reach quarry; may leave earth several times and re-enter; work quarry for one minute.)

### **Class 59: Other Terrier Open Adult**

Open to terriers that do not meet the requirements for JRTCA go-to-ground competition. Ex. Low-rider, outlaw, colored terrier. To be run in the long tunnel. (30 seconds to reach quarry; may leave earth once and re-enter; work quarry for one minute.)

## **Super Earth Go-to-Ground**

A challenging GTG course with a series of false entrances and/or false tunnels and dens. Open to any Jack Russell Terrier, 6 months and older. 30 seconds per 30 feet of tunnel to reach quarry; may leave and re-enter earth several times until the quarry is reached then must work quarry for one full minute without a break in work and without leaving quarry. May switch from one type of work to another without penalty.

### **Class 60: 6 up to 12 month OPEN Puppy Super Earth**

### **Class 61: 10 up to 12½" OPEN Adult Super Earth.**

Open to terriers one year and older.

### **Class 62: Over 12½ up to 15" OPEN Super Earth**

Open to terriers one year and older.

### **Class 63: 10 up to 12½" OPEN Veteran Super Earth**

Open to terriers six years and older.

### **Class 64: Over 12½ up to 15" OPEN Veteran Super Earth**

Open to terriers six years and older.

### **Class 65: Adult Certificate Super Earth**

Open to Jack Russell Terriers, one year and older, which hold a JRTCA Super Earth Trial Certificate. A copy of the certificate must be submitted with pre-entry or be shown to the Den Steward at the time of the class. First and Second Place winners will be Adult Super Earth Champion and Reserve.

### **Class 66: Veteran Certificate Super Earth**

Open to Jack Russell Terriers, six years and older, which hold a JRTCA Super Earth Trial Certificate. A copy of the certificate must be submitted with pre-entry or be shown to the Den Steward at the time of the class. First and Second Place winners will be Veteran Super Earth Champion and Reserve.

## ***Non-Sanctioned Super Earth***

### **Class 67: Other Terrier 6 to 12 month Puppy Super Earth**

Open to terrier puppies 6-12 months that do not meet the requirements for JRTCA go-to-ground competition. Ex. Low-rider, outlaw, colored terrier. (30 seconds to reach quarry; may leave earth several times and re-enter; work quarry for one minute.)

### **Class 68: Other Terrier Adult Super Earth**

Open to terriers that do not meet the requirements for JRTCA go-to-ground competition. Ex. Low-rider, outlaw, colored terrier. (30 seconds to reach quarry; may leave earth once and re-enter; work quarry for one minute.)

## **Urban Hunt (Non-Sanctioned)**

### **Class 69: Urban Hunt**

A fun interactive competition for terriers. Your terrier must work to find the quarry (rat) in the shortest amount of time.

## **Underland Tunnel (Non-Sanctioned)**

### **Class 70: Underland Tunnel**

Two runs per entry. Best time used. More runs can be purchased but only first two runs will count for competition.

## Lure Coursing (Non-Sanctioned)

### Class 71: Lure Coursing

\$3 per run. Terriers can be entered as many times as you choose but you may only pre-enter for 2 runs.

## SUNDAY

### Racing

ALL terriers must be muzzled to race with either a plastic basket or close-ended cloth muzzle. To be eligible in the Championship, terriers must compete in both flats & hurdles. You MUST have your Jack ON DECK and securely muzzled in order to race. If you need help, please ask for it in advance. DO NOT wait until it's time to load into the starting boxes. BE PREPARED. Racing classes will be run in the precise sequence posted in this trial premium.

#### *Flat Races*

**Class 72: Pups, 4-6 months (Non-Sanctioned)**

**Class 73: Pups, 6 up to 9 months, up to 12½"**

**Class 74: Pups, 6 up to 9 months, over 12½" up to 15"**

**Class 75: Pups, 9 up to 12 months, up to 12½"**

**Class 76: Pups, 9 up to 12 months, over 12½" up to 15"**

**Class 77: Dogs, 1 year and older, 10" up to 12½"**

**Class 78: Dogs, 1 year and older, over 12½" up to 15"**

**Class 79: Bitches, 1 year and older, 10" up to 12½"**

**Class 80: Bitches, 1 year and older, over 12½" up to 15"**

**Class 81: Veteran Dog, 6 years and older, 10" up to 12½"**

**Class 82: Veteran Dog, 6 years and older, over 12½" up to 15"**

**Class 83: Veteran Bitch, 6 years and older, 10" up to 12½"**

**Class 84: Veteran Bitch, 6 years and older, over 12½" up to 15"**

**Class 85: Senior Dog, 9 Years and older, 10" up to 12½"**

**Class 86: Senior Dog, 9 Years and older, 12½" up to 15"**

**Class 87: Senior Bitch, 9 Years and older, 10" up to 12½"**

**Class 88: Senior Bitch, 9 Years and older, 12½" up to 15"**

**Class 89: Other Terrier, 1 year and older, Under 12½" (Non-Sanctioned)**

Open to terriers that do not meet the requirements for JRTCA racing. Low-rider (under 10") or colored terrier.

**Class 90: Other Terrier, 1 year and older, Over 12½" (Non-Sanctioned)**

Open to terriers that do not meet the requirements for JRTCA racing. Outlaw (over 15") or colored terrier.

#### *Steeplechase Races*

Puppy and Senior races over low hurdles, up to 8"

Adult and Veteran Races over higher hurdles, over 8" up to 16"

**Class 91: Pups, 6 up to 9 months, up to 12½"**

**Class 92: Pups, 6 up to 9 months, over 12½" up to 15"**

**Class 93: Pups, 9 up to 12 months, up to 12½"**

**Class 94: Pups, 9 up to 12 months, over 12½" up to 15"**

**Class 95: Senior Dog , 9 Years and older, 10" up to 12½"**

**Class 96: Senior Dog, 9 Years and older, 12½" up to 15"**

**Class 97: Senior Bitch, 9 years and older, 10" up to 12½"**

**Class 98: Senior Bitch, 9 Years and older, 12½" up to 15"**

**Class 99: UP TO 12½" PUPPY RACING CHAMPION & RESERVE**

Open to 1st place winners of 6 to 9 mo. and 9 to 12 mo. up to 12½" puppy classes. No entry fee.

**Class 100: OVER 12½" UP TO 15" PUPPY RACING CHAMPION & RESERVE**

Open to 1st place winners of all 12½" up to 15" puppy classes. No entry fee.

**Class 101: 10" UP TO 12½" SENIOR RACING CHAMPION & RESERVE**

Open to 1st place winners of all 10" up to 12½" Senior classes. No entry fee.

**Class 102: OVER 12½" UP TO 15" SENIOR RACING CHAMPION & RESERVE**

Open to 1st place winners of all 12½" up to 15" Senior classes. No entry fee.

**Class 103: Dogs, 1 year and older, 10" up to 12½"**

**Class 104: Dogs, 1 year and older, over 12½" up to 15"**

**Class 105: Bitches, 1 year and older, 10" up to 12½"**

**Class 106: Bitches, 1 year and older, over 12½" up to 15"**

**Class 107: Veteran Dog, 6 years and older, 10" up to 12½"**

**Class 108: Veteran Dog, 6 years and older, over 12½" up to 15"**

**Class 109: Veteran Bitch, 6 years and older, 10" up to 12½"**

**Class 110: Veteran Bitch, 6 years and older, over 12½" up to 15"**

**Class 111: Other Terrier, 1 year and older, Under 12½" (Non-Sanctioned)**

Open to terriers that do not meet the requirements for JRTCA racing. Low-rider (under 10") or colored terrier.

**Class 112: Other Terrier, 1 year and older, Over 12½" (Non-Sanctioned)**

Open to terriers that do not meet the requirements for JRTCA racing. Outlaw (over 15") or colored terrier.

**Class 113: 10" UP TO 12½" ADULT CHAMPION & RESERVE**

Open to 1st place winners of 10" UP TO 12½" ADULT classes. No entry fee.

**Class 114: Over 12½" UP TO 15" ADULT CHAMPION & RESERVE**

Open to 1st place winners of Over 12½" UP TO 15" ADULT classes. No entry fee.

**Class 115: 10" up to 12½" VETERAN RACING CHAMPION & RESERVE**

Open to 1st place winners of VETERANS, 10" up to 12½" classes. No entry fee.

**Class 116: Over 12½" up to 15" VETERAN RACING CHAMPION & RESERVE**

Open to 1st place winners of VETERANS, Over 12½" UP TO 15" classes. No entry fee.

## **Youth**

**Class 117: Child Go-to-Ground (Non-Sanctioned)**

Open to any child aged 5 through 9, handling an adult Jack Russell Terrier. Judged on the child's ability to present his/her dog and knowledge of GTG. To be run through the 10-foot Novice liner; time not to be considered. If the terrier is competing in a regular GTG class, it needs to run in the regular GTG class before it can compete in Child GTG.

**Class 118: Youth Go-to-Ground**

Open to any youth aged 10 through 16, handling an adult Jack Russell Terrier. Judges on Youth's ability to present his/her dog and knowledge of GTG. To be run through 10 foot novice liner. Time not to be considered. If terrier is competing in a regular GTG class, it needs to run in regular GTG class before it can compete in Youth GTG.

## Go-to-Ground

A timed event that simulates the terrier's natural instinct to hunt. The terrier enters an artificial den/tunnel to demonstrate its working ability. Schooling prior to the competition is not permitted. Any violation of this rule shall result in disqualification from the Go-To-Ground competition at this trial. For all classes: work is defined as baying, digging, concentrated stare, whining or biting at the bars. A break in work is defined as ceasing to work for a period of more than ten seconds. Leaving the quarry is defined as moving back in the tunnel away from quarry and out of the view of the judge. The judge may halt the work, if the judge believes the terrier is injuring itself. Copies of JRTCA trial certificate must be submitted with pre-entries or presented to the den steward at the time of judging. Cross entering is not permitted between certificate classes.

### **Class 119: Novice Puppy**

Open to Jack Russells 6 up to 12 months which have not scored 100% in this class at a previous JRTCA trial. Entries earning a score of 100% at this trial may, upon payment of the entry fee, enter the Open Puppy Class at this trial. (One minute to reach quarry; may leave earth and re-enter several times until quarry is reached; when quarry is reached must work quarry continuously for a full 30 seconds without a break in work and without leaving the quarry; may switch from one type of work to another (examples: baying to concentrated stare or digging to baying.)

### **Class 120: Novice Adult**

Open to Jack Russells one year of age or older which have not scored 100% in this class at a previous JRTCA trial. Entries earning a score of 100% at this trial may, upon payment of the entry fee, enter the Open class at this trial. (One minute to reach quarry; may leave earth and re-enter several times until quarry is reached; must work quarry continuously for a full 30 seconds without a break in work and without leaving the quarry; may switch from one type of work to another (examples baying to concentrated stare or digging to baying.)

### **Class 121: Open Puppy**

Open to Jack Russells 6 up to 12 months which have scored 100% in a Novice Go-To-Ground class at this or a previous JRTCA trial. Not open to any puppies which have previously achieved 100% in this class. Puppies earning a score of 100% at this trial may, upon payment of the entry fee, enter the Puppy Championship GTG class at this trial. (30 seconds to reach quarry; may leave earth once and re-enter before quarry is reached; must work quarry continuously for one full minute without a break in work and without leaving quarry; may switch from one type of work to another.)

### **Class 122: Open Adult**

Open to Jack Russells one year or older which have scored 100% in a Novice Go-To-Ground class at this or a previous JRTCA trial. (30 seconds to reach quarry; may leave earth once and re-enter before the quarry is reached; must work quarry continuously for one full minute without a break in work and without leaving quarry; may switch from one type of work to another.)

### **Class 123: Puppy Championship**

Open to Jack Russells, 6 up to 12 months which have earned 100% in an Open Go-To-Ground class at this or a previous JRTCA trial. A copy of a 100% Open score sheet shall be submitted with pre-entry or be shown to the Den Steward at the time of the class. First and second place winners will be Puppy Go-To-Ground Champion and Reserve. (30 seconds to reach quarry; may leave earth once and re-enter before the quarry is reached; when quarry is reached must work quarry for one full minute without a break in work and without leaving quarry; may switch from one type of work to another.)

### **Class 124: 10 up to 12½" Championship Certificate**

Open to any adult Jack Russell 10 up to 12½", one year and over, which holds a JRTCA Trial Certificate. A copy of the certificate must be submitted with pre-entry or be shown to the Den Steward at the time of the class. First and second place winners will be Go-To-Ground Champion and Reserve. (30 seconds to reach quarry; may not leave earth; work quarry for one full minute without a break in work and without leaving quarry.)

### **Class 125: Over 12½ up to 15" Championship Certificate**

Open to any adult Jack Russell over 12½" up to 15", one year and over, which holds a JRTCA Trial Certificate. A copy of the certificate must be submitted with pre-entry or be shown to the Den Steward at the time of the class. First and second place winners will be Go-To-Ground Champion and Reserve. (30 seconds to reach quarry; may not leave earth; work quarry for one full minute without a break in work and without leaving quarry.)

**Class 126: 10 up to 12 ½" Veteran Championship Certificate**

Open to any adult Jack Russell 6 years of age or older, who holds a JRTCA Trial Certificate. CROSS-ENTERING IS NOT PERMITTED BETWEEN CERTIFICATE CLASSES. (30 seconds to reach quarry; may not leave earth; work quarry for one full minute without a break in work and without leaving quarry.)

**Class 127: Over 12 ½ up to 15" Veteran Championship Certificate**

Open to any adult Jack Russell 6 years of age or older, who holds a JRTCA Trial Certificate. CROSS-ENTERING IS NOT PERMITTED BETWEEN CERTIFICATE CLASSES. (30 seconds to reach quarry; may not leave earth; work quarry for one full minute without a break in work and without leaving quarry.)

**Class 128: Senior Championship Certificate**

Open to any adult Jack Russell 9 years of age or older, who holds a JRTCA Trial Certificate. CROSS-ENTERING IS NOT PERMITTED BETWEEN CERTIFICATE CLASSES. (30 seconds to reach quarry; may not leave earth; work quarry for one full minute without a break in work and without leaving quarry.)

***Non-Sanctioned Go-To-Ground*****Class 129: Other Terrier Open Puppy**

Open to terrier puppies 6-12 months that do not meet the requirements for JRTCA go-to-ground competition. Ex. Low-rider, outlaw, colored terrier. To be run in the long tunnel. (30 seconds to reach quarry; may leave earth several times and re-enter; work quarry for one minute.)

**Class 130: Other Terrier Open Adult**

Open to terriers that do not meet the requirements for JRTCA go-to-ground competition. Ex. Low-rider, outlaw, colored terrier. To be run in the long tunnel. (30 seconds to reach quarry; may leave earth once and re-enter; work quarry for one minute.)

**Super Earth Go-to-Ground**

A challenging GTG course with a series of false entrances and/or false tunnels and dens. Open to any Jack Russell Terrier, 6 months and older. 30 seconds per 30 feet of tunnel to reach quarry; may leave and re-enter earth several times until the quarry is reached then must work quarry for one full minute without a break in work and without leaving quarry. May switch from one type of work to another without penalty.

**Class 131: 6 up to 12 month OPEN Puppy Super Earth****Class 132: 10 up to 12½" OPEN Adult Super Earth.**

Open to terriers one year and older.

**Class 133: Over 12½ up to 15" OPEN Super Earth**

Open to terriers one year and older.

**Class 134: 10 up to 12½" OPEN Veteran Super Earth**

Open to terriers six years and older.

**Class 135: Over 12½ up to 15" OPEN Veteran Super Earth**

Open to terriers six years and older.

**Class 136: Adult Certificate Super Earth**

Open to Jack Russell Terriers, one year and older, which hold a JRTCA Super Earth Trial Certificate. A copy of the certificate must be submitted with pre-entry or be shown to the Den Steward at the time of the class. First and Second Place winners will be Adult Super Earth Champion and Reserve.

**Class 137: Veteran Certificate Super Earth**

Open to Jack Russell Terriers, six years and older, which hold a JRTCA Super Earth Trial Certificate. A copy of the certificate must be submitted with pre-entry or be shown to the Den Steward at the time of the class. First and Second Place winners will be Veteran Super Earth Champion and Reserve.

## ***Non-Sanctioned Super Earth***

### **Class 138: Other Terrier 6 to 12 month Puppy Super Earth**

Open to terrier puppies 6-12 months that do not meet the requirements for JRTCA go-to-ground competition. Ex. Low-rider, outlaw, colored terrier. (30 seconds to reach quarry; may leave earth several times and re-enter; work quarry for one minute.)

### **Class 139: Other Terrier Adult Super Earth**

Open to terriers that do not meet the requirements for JRTCA go-to-ground competition. Ex. Low-rider, outlaw, colored terrier. (30 seconds to reach quarry; may leave earth once and re-enter; work quarry for one minute.)

## **Urban Hunt (Non-Sanctioned)**

### **Class 140: Urban Hunt**

A fun interactive competition for terriers. Your terrier must work to find the quarry (rat) in the shortest amount of time.

## **Underland Tunnel (Non-Sanctioned)**

### **Class 141: Underland Tunnel**

Two runs per entry. Best time used. More runs can be purchased but only first two runs will count for competition.

## **Lure Coursing (Non-Sanctioned)**

### **Class 142: Lure Coursing**

\$3 per run. Terriers can be entered as many times as you choose but you may only pre-enter for 2 runs.

Owner's Name: \_\_\_\_\_

Street: \_\_\_\_\_

Town: \_\_\_\_\_ State: \_\_\_\_\_ Zip: \_\_\_\_\_

Phone: \_\_\_\_\_ Email: \_\_\_\_\_



**Fill out and send to:**  
 ROCKY MOUNTAIN JRT NETWORK  
 16118 E GEDDES DR  
 AURORA, CO 80016  
**Make Checks Payable To: RMJRTN**

**Entry Fees:**

|             |                      |
|-------------|----------------------|
| <b>Pre</b>  | RMJRTN members \$ 12 |
|             | nonmembers \$ 15     |
| <b>Post</b> | RMJRTN members \$ 15 |
|             | nonmembers \$ 16     |

All Entries Postmarked after 9/16/2019  
 will be considered POST ENTRIES

| Classes Entered | Terrier's Full Name | Owner's Name | Sex | Age | Birth date | Height/<br>Coat | JRTCA<br>Reg# | Entry Fee |
|-----------------|---------------------|--------------|-----|-----|------------|-----------------|---------------|-----------|
|                 |                     |              |     |     |            |                 |               |           |
|                 |                     |              |     |     |            |                 |               |           |
|                 |                     |              |     |     |            |                 |               |           |
|                 |                     |              |     |     |            |                 |               |           |
|                 |                     |              |     |     |            |                 |               |           |
|                 |                     |              |     |     |            |                 |               |           |
|                 |                     |              |     |     |            |                 |               |           |

For Child & Youth classes, please list the name and age of the HANDLER who will be exhibiting.

\_\_\_\_\_

All exhibitors and owners must be current JRTCA members. Please include a copy of your membership card with entries.

JRTCA Membership #

\_\_\_\_\_

I hereby enter the above at my own risk, and I hereby engage to be responsible for any injury or damages that may occur to, or be caused by, any animals, vehicles, or trappings or the loss of any animal, vehicles, or trappings exhibited by me, and I further agree to be absolutely responsible for the physical condition of any animal under my control of ownership and will release, indemnify, and save harmless the *Ruckus in the Rockies*, RMJRTN and the JRTCA, Inc. from any damage, expense, and/or liability arising out of or resulting from any act of the Exhibitor or the *Ruckus in the Rockies*, RMJRTN or their agents or employees. I hereby certify that my dogs are free from contagious disease, and that I am not a member of a conflicting JRT organization, nor do I register my Jack Russell Terriers with any conflicting JRT Club or all-breed registry.

Signature: \_\_\_\_\_ Date: \_\_\_\_\_

**Total Entry Fees:** \_\_\_\_\_

**JRTCA Administrative Fee (\$2 or \$7\* per dog)** \_\_\_\_\_

**Camping \$25/night:** \_\_\_\_\_

**Saturday dinner \$20** \_\_\_\_\_

**Sponsorship:**

**Regular class \$10** \_\_\_\_\_

**Championship class \$25** \_\_\_\_\_

**Total Enclosed:** \_\_\_\_\_

\* \$2.00 for registered/recorded terriers  
 \$7.00 for non-registered/recorded terriers



**Membership Application**

\$25.00 Family  
\$20.00 Individual  
\$10.00 Youth

Make checks payable to RMJRTN and mail to:  
Carrie Wilton  
16118 E Geddes Dr  
Aurora CO 80016

Name: \_\_\_\_\_

Address: \_\_\_\_\_

City: \_\_\_\_\_ State: \_\_\_\_\_ Zip: \_\_\_\_\_

Phone: \_\_\_\_\_

E-Mail: \_\_\_\_\_

Person applying for membership in the RMJRTN or renewing a current membership and members of their immediate families must not be a member of a conflicting JRT Organization as defined by the JRTCA and must not register their JRT's with any conflicting organization of kennel clubs (ie: UKC, AKC, etc.). Conflicting organizations include any organization promoting kennel club recognition of the JRT ( ie: the JRT Association of America, formerly known as the JTR breeders Association, and the Parson JRT Club of England). Membership may be terminated, suspended, or refused for any conduct which may be considered likely to prejudice or damage the image of or interfere with the efficient running of the club, or which compromises the breed in any way.

I hereby apply for membership in the RMJRTN. I agree to abide by the objectives and purposes stated in the JRTCA constitution and certify that I do not belong to a conflicting JRT organization, nor do I register my Jack Russells with any all breed kennel club or conflicting organization.

Signed: \_\_\_\_\_ Date: \_\_\_\_\_